

Panel Locks



CL-001



CLK-001



CLK-002



CLK-003



CLK-004



CLK-005



CLK-006



CLK-007



CLK-008



CLK-009



CLK-010



CLK-011



CLK-012



CLK-013



CLK-014



CLK-015



CLK-016



CLK-014



ZRPK-001



ZRPK-002



ZRPK-003



ZRPK-004



ZRPK-005



ZRPK-006



ZRPK-007



ZRPK-008



ZTPK-001



ZTPK-002



ZTPK-003



ZTPK-004



SL-001



SL-002



SL-003

SL-004



SL-005



FKLK-001



FKLK-002

 <p>FKLK-003</p>	 <p>FCLK-004</p>	 <p>DRLK-001</p>
 <p>PLK-001</p>	 <p>PLK-002</p>	 <p>PLK-003</p>
 <p>PLK-004</p>	 <p>PLK-005</p>	 <p>HLK-001</p>
 <p>HLK-002</p>	 <p>HLK-003</p>	 <p>HLK-004</p>



HLK-005



HLK-006



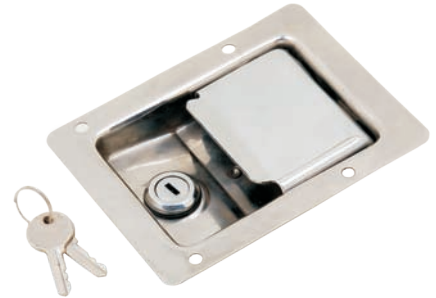
HLK-006



SLK-001



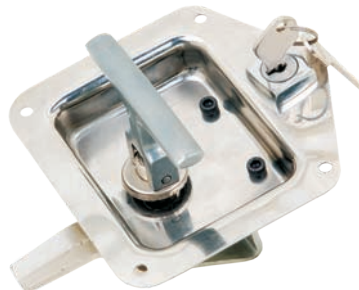
SLK-002



SLK-003



SLK-004



SLK-005



SLK-006



SLK-007



SLK-008

 <p>NMKML-001</p>	 <p>NMKML-003</p>	 <p>NMDL-001</p>
 <p>NMD-003</p>	 <p>NMDLD-003</p>	 <p>CL-007</p>
 <p>PL-001</p>	 <p>RDK-001</p>	 <p>NMFL-003</p>
 <p>CL-001</p>	 <p>PDL-001</p>	 <p>PDL-002</p>

 <p>SLS-001</p>	 <p>SLS-002</p>  <p>SLS-003</p>	 <p>SLS-004</p>
 <p>SLS-005</p>	 <p>SLS-006</p>	 <p>SLS-007</p>
 <p>SLS-008</p>	 <p>SLS-009</p>	 <p>SLS-010</p>
 <p>SLS-011</p>		

Panel Hinges & Handles

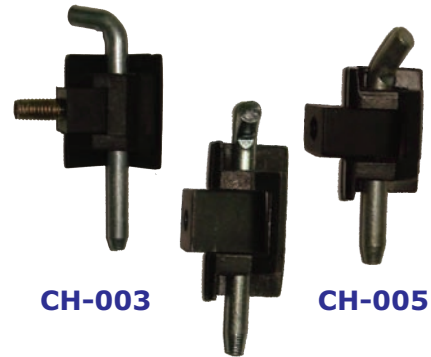
 <p>SMH-001</p>	 <p>SMH-002</p>	 <p>SMH-003</p>
 <p>SMH-004</p>	 <p>SMH-005</p>	 <p>SMH-006</p>
 <p>SMH-007 SMH-008</p>	 <p>SMH-009</p>	 <p>SMH-010</p>
 <p>SMH-011</p>	 <p>SMHS-001</p>	 <p>NH-001</p>



CH-001



CH-002



CH-003

CH-004

CH-005



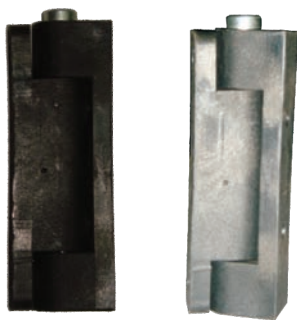
AH-001



ALHE-001



MCU-001



NMH-001



CHS-001



CHS-002



CHP-001



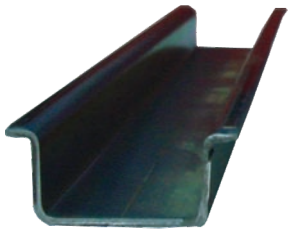
CHP-002



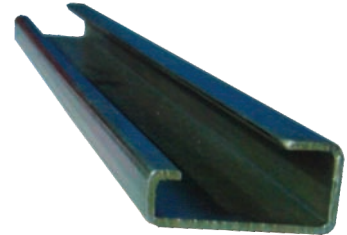
CHP-003

 <p>CHP-004</p>	 <p>CHP-005</p>	 <p>GH-001</p>
 <p>SMH-004</p>	 <p>SMH-005</p>	 <p>SMH-006</p>  <p>SMH-007</p>
 <p>SMH-008</p>	 <p>SMH-009</p>	 <p>SMH-010</p>
 <p>SMH-011</p>	 <p>AH-003</p>  <p>WH-002</p>  <p>WH-001</p>	 <p>BH001</p>  <p>BH002</p>  <p>BH003</p>

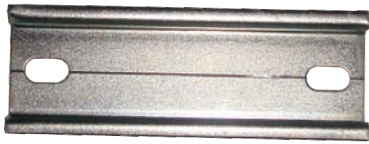
Accessories



DR-002



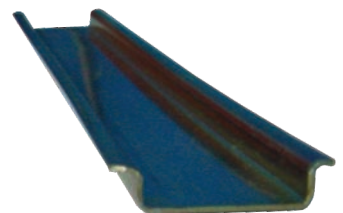
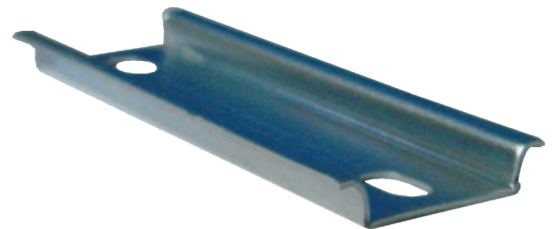
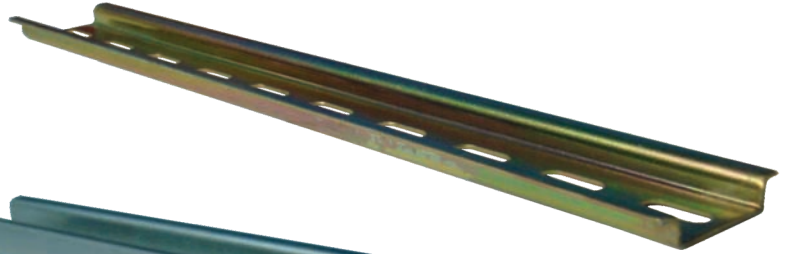
OR-001



DR-001



MR-001





W-001



W-002



W-003



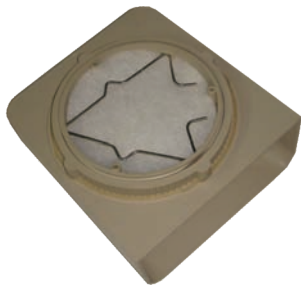
FC-004



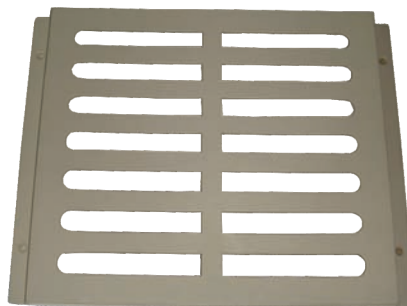
FS-003



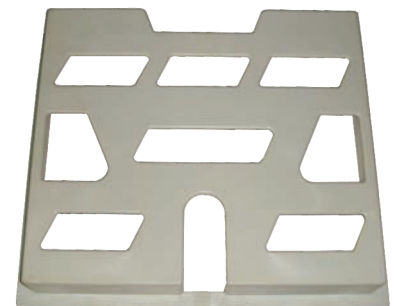
FS-005



F-001



DH-002



DH-003



DH-001



RH-001



JH-001

 <p>Single way blank</p>	 <p>Cable Holder</p>	 <p>2 way connector</p>
 <p>end stopper</p>	 <p>End Cap Neutral Base</p>	 <p>Different types of neutral link base</p>
 <p>WS-001</p>	 <p>IDH-001 AH-001 AH-002</p>	 <p>Powder Coated Handle</p>
 <p>Steel Handle</p>	 <p>Connector</p>	



14/B, Nahar & Seth Indl. Estate, L.B.S. Marg, Bhandup (West), Mumbai - 400 078. (INDIA).
Tel. : 91-22-2596 1622 / 33 / 44 • Fax : 91-22-2596 1655
E-mail : nylex@vsnl.com • Website : www.nylexgroup.com



NYLEX GROUP
ESTD 1966



14/B, Nahar & Seth Indl. Estate, L.B.S. Marg, Bhandup (West), Mumbai - 400 078. (INDIA).
Tel. : 91-22-2596 1622 / 33 / 44 • Fax : 91-22-2596 1655
E-mail : info@nylexgroup.com • Website : www.nylexgroup.com



NYLEX GROUP
ESTD 1966